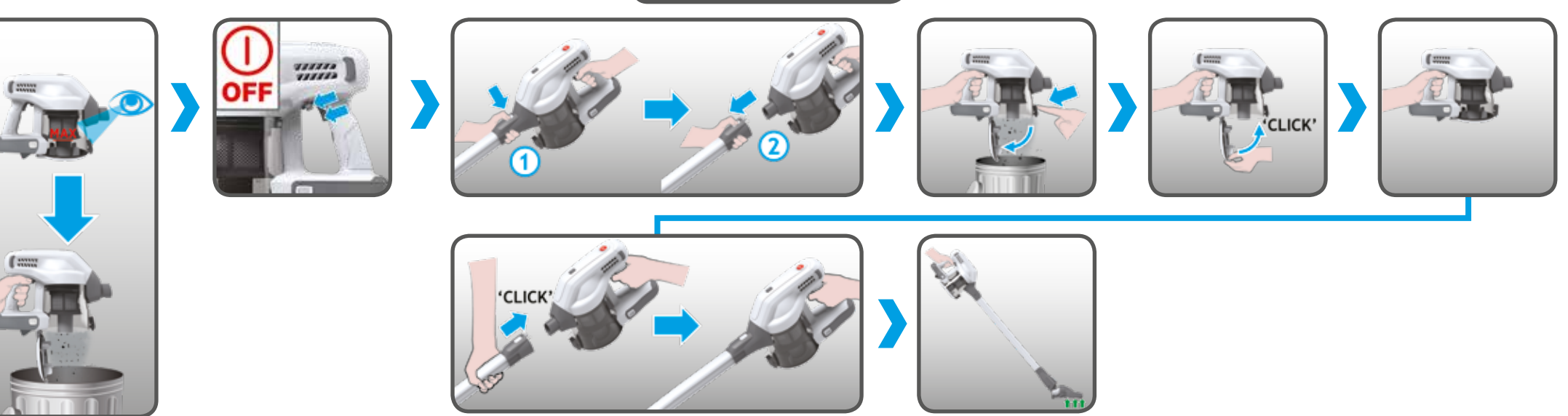
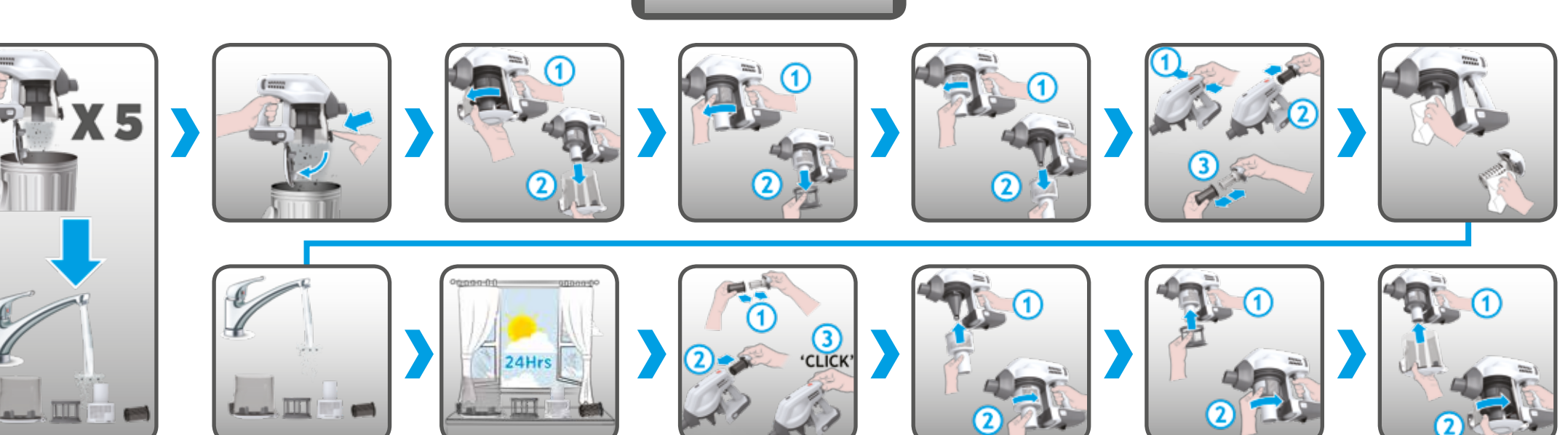


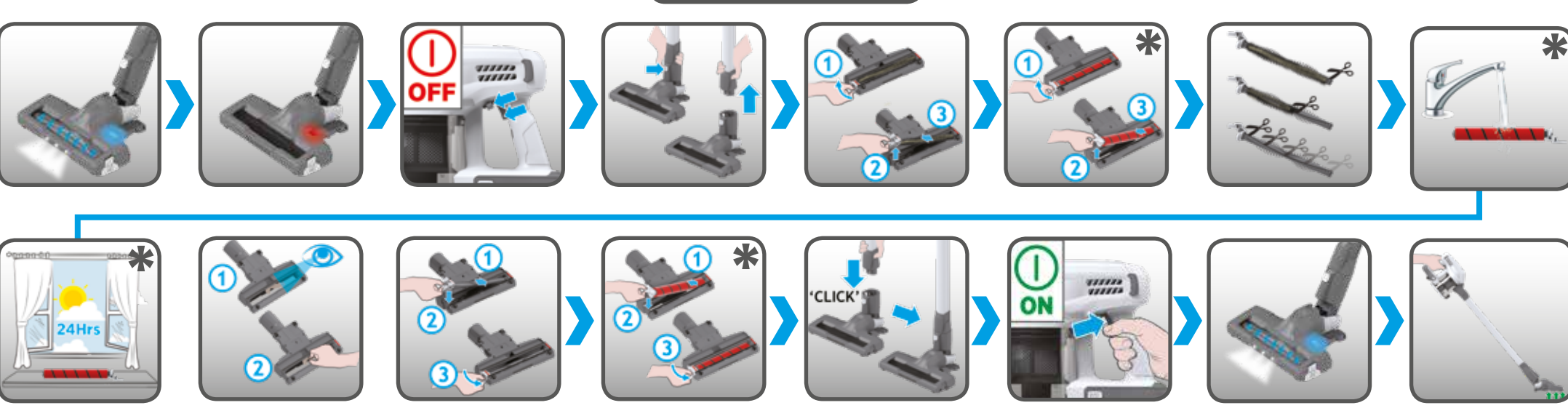
4










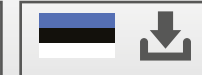

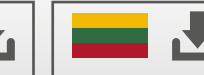













5



6



 www.hoover.co.uk	 www.hoover.fr	 www.hoover.it	 www.hoover.de	 www.hoover.es	 www.hoover.al	 www.hoover.be	 www.hoover.bg	 www.hoover.hr	 www.hoover.cz
 www.hoover.dk	 www.hoover-baltics.com	 www.hoover.fi	 www.hoover.gr	 www.hoover.hu	 www.hoover-baltics.com	 www.hoover-baltics.com	 www.hoover.ma	 www.hoover.nl	 www.hoover-norge.no
 www.hoover.pl	 www.hoover-pt	 www.hoover.ro	 www.hoover.ru	 www.hoover.rs	 www.hoover.sk	 www.hoover.si	 www.hoover.se	 www.hoover.ch	 www.hoover.com.tr
 www.hoover.ua	 www.hoover-overseas.com								

* GB - Content may vary according to your model. FR - Le contenu peut varier en fonction de votre modèle. DE - der inhalt kann je nach modell variieren. IT - I contenuti possono variare secondo il modello. NL - inhoud kan variëren volgens uw model. PT - o conteúdo pode variar de acordo com o modelo. ES - el contenido puede variar en base a su modelo. DK - indholdet kan variere i henhold til modellen. NO - innholdet kan variere avhengig av modellen. SE - innehållet kan variera beroende på modell. FI - sisältö saattaa vaihdella mallista riippuen. GR - το περιεχόμενο ενδέχεται να διαφέρει αναλόγα με το μοντέλο. RU - содержимое может меняться в зависимости от модели. PL - zawartość może być inna w zależności od modelu. CZ - obsah směže lišit v závislosti na vašem modelu. SI - obsah sa može lišiti v závislosti od modela. TR - içerik modelinize göre farklılık gösterebilir.




GB User Manual
FR Guide de l'utilisateur
DE Bedienungsanleitung
IT Manuale d'uso
NL Gebruikershandleiding
PT Manual de Instruções
ES Guía del usuario
DK Brugervejledning
NO Bruksanvisning
SE Instruktionsmanual
FI Käyttöohje
GR Οδηγίες Χρήσεως
RU Руководство пользователя

PL Instrukcja Obsługi
CZ Návod k obsluze
SI Navodila Za Uporabo
TR Kullanım Kilavuzu

APPLY MANUAL LABEL
HERE

GB - Please read the 'Instructions for Safe Use and Fittings' booklet before using your product. FR - Veuillez lire le paragraphe « Instructions De Sécurité D'utilisation Et De Raccordement » avant d'utiliser votre produit. DE - Bitte lesen Sie vor dem Gebrauch des Geräts aufmerksam die „Bedienungsanleitung zur sicheren Benutzung“. IT - Leggere con attenzione il libretto "Istruzioni Per Un Uso Sicuro E Per Il Montaggio Degli Accessori Opzionali" prima di utilizzare il prodotto. NL - Lees 'Instructies Voor Veilig Gebruik En Aansluitingen' voor u het produkt in gebruik neemt. PT - Por favor leia o manual "instruções Para Utilização E Instalação Seguras" antes de começar a usar o produto. ES - Por favor lea las "instrucciones Para Un Uso Seguro Y Para El Montaje" antes de utilizar el producto. DK - Læs venligst vejledningen "instruktioner For Sikker Brug Og Samling", inden du tager produktet i brug. NO - Vennligst les veiledningen "Instruksjoner For Sikker Bruk Og Monteringer" før du bruker produktet. SE - Var vänlig läs "Instruktioner för säker användning" innan ni använder denna produkt. FI - Tutustu ennen tuotteen käyttöä "Iisävarusteiden Turvallisen Käytön Ja Asennuksen Ohjeet" ohjeeseen. GR - Παρακαλώ διαβάστε την ενότητα 'Οδηγίες Ασφαλουσ Χρήσεως Και Εξαρτημάτων' στο Βιβλίο οδηγιών, πριν χρησιμοποιήσετε το προϊόν. RU - Перед использованием прибора необходимо ознакомиться с -Инструкция По Безопасному Исползованию И Применению-. PL - Przed użyciem produktu, proszę zapoznać się z Instrukcją Bezpiecznego Użytkowania I Akcesoriów. CZ - Před použitím výrobku si důkladne přečtěte a dodržujte pokyny v brožurce "návod K Bezpečnému Použití A Upevnění". SI - Prosim Preberite Navodila Za Varno Uporabo In Sestavo Dodatnih Pripomočkov. TR - Lütfen ürünü kullanmadan önce kullanma kilavuzundaki 'güvenli Kullanım Ve Donanım' bölümünü okuyunuz.

HOOVER

1



'CLICK'

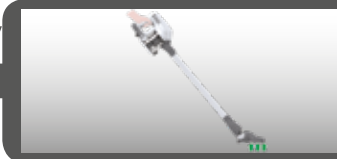
'CLICK'

2



* GB - Content may vary according to your model. FR - Le contenu peut varier en fonction de votre modèle. DE - der inhalt kann je nach modell variieren. IT - I contenuti possono variare secondo il modello. NL - inhoud kan variëren volgens uw model. PT - o conteúdo pode variar de acordo com o modelo. ES - el contenido puede variar en base a su modelo. DK - indholdet kan variere i henhold til modellen. NO - innholdet kan variere avhengig av modellen. SE - innehåll kan variera beroende på modell. FI - sisältö saattaa vaihdella mallista riippuen. GR - το περιεχόμενο ενδέχεται να διαφέρει αναλόγα με το μοντέλο. RU - содержимое может меняться в зависимости от модели. PL - zawartość może być inna w zależności od modelu. CZ - obsah semůže lišit v závislosti na vašem modelu. SI - obsah sa može lišiti v závislosti od modela. TR - içerik modelinize göre farklılık gösterebilir.

3



'CLICK'

'CLICK'

ON

ON

OFF

ON

OFF

ON

OFF

TURBO MODE

OFF